



Indicator and Cable

Eiland Communications Limited

Tel +44(0)1226 766122, Mobile +44(0)7766 383634

enquiries@eiland-communications.co.uk

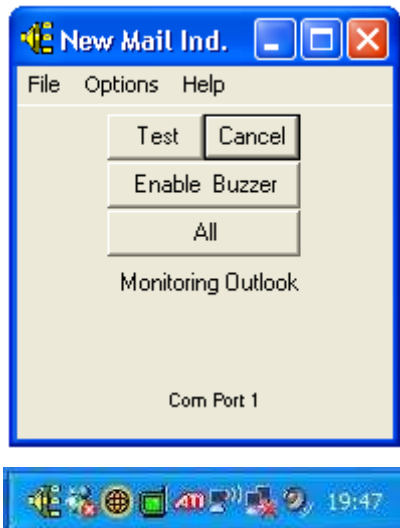


121 x 56 x31mm

New Mail Indicator

Intended for marine/shipboard use the New Mail Indicator (NMI) lets the user know without having to return to their PC that new mail has arrived. They can see or hear from a distance that they have mail.

Typical applications include **MPDS** or **HF based** systems that 'silently' receive e-mail without warning. Other advantages can be avoiding having to power up the PC monitor in a darkened bridge to check for mail or, by siting the NMI away from the PC, being able to lock the workspace where the PC is located (e.g. the bridge when in port).



Under **Windows XP, Windows 2000 and Windows 98** the indicator works with **Outlook 2000** onwards.

At the PC the NMI can be controlled from a user window or from the system tray where an icon also shows when new mail has arrived. The user window can be minimised to work behind a program that utilises the entire screen or behind the screen-saver, password protected for extra privacy. The Outlook window does not have to be visible for the unit to operate.

The audible alarm can be disabled in software and also manually cancelled at the remote location that may be up to 30 metres away. In the idle mode a visual 'keep alive' signal from the NMI re-assures you that your inbox is still being monitored and that the alarm is still functioning.

Powered from a standard 9-way serial port the NMI has both audible and visual alarms. (For a more powerful sounder and with some USB derived or PCMCIA serial ports that give insufficient power a universal 90-240V AC adapter is available as an option). The hardware comprises an ABS box housing the single PCB, led indicator, sounder and cancel button. For ease of installation cabling is 'off the shelf' Cat5 network cable terminated with RJ45 plugs.

New Mail Indicator Functionality

The **New Mail Indicator (NMI) Program** runs in the background on the PC and links in with Outlook (2000, XP or 2003, but not 97). Outlook needs to have been setup to perform a send/receive operation as you would with a network server, dial up service or **MPDS**. Because the interface is with the desktop PC the NMI works with any type of connection.

Selectivity: - By using the Rules feature of Outlook it is possible to make the NMI activate selectively. The inbox is checked for **new mail** every 10 seconds and on receipt of new mail or a **new mail header** the desktop tray icon changes state. If the New Mail Indicator hardware is connected the **LED** will light and, optionally (user selectable) the **buzzer** will sound.

Spam:-If any SPAM disappears from the inbox before the inbox is checked the NMI will not sound.

Working at the PC:-With both the Outlook and the NMI windows **minimised** you can work on other tasks without intrusion. If you are busy a quick right click then cancel on the tray icon clears the NMI. Furthermore once up and running the Outlook window can be closed from view altogether. Because of the way the NMI works however, Outlook will remain running invisibly in the background greatly **reducing** its drain on **system resources**.

Away from the PC: - The **New Mail Indicator** hardware comprises a small box with an LED, buzzer and a buzzer cancel button. In the idle mode (no new mail) the LED lights briefly every 10 seconds when the mailbox is checked to let you know that Outlook is still being monitored. At the same time the NMI sends an acknowledgement to the PC thus fully checking the system. If you are away from your PC you can switch off the monitor (useful on a darkened bridge), or password-protect a screensaver to prevent 'casual eyes' looking at the screen or lock the workspace. The PC might be on the bridge and the NMI in the ship's office.

Setting to Work: - The software is loaded from the CD supplied with the package. Without the NMI connected the software will function just to change the tray icon on receipt of mail. The NMI is connected to one of the PC's serial com ports initially by a short cable (supplied) before siting the unit at the remote location. Connection is then made using 'off the shelf' networking (**cat 5**) cable. The unit is designed to be 'uncomplicated' so the settings are limited to com port selection and buzzer enable. All are remembered even if the PC power is cycled.

The package includes

New Mail Indicator: - Black ABS box dimensions 121 x 55 x 31mm containing PCB, LED, cancel button and buzzer (buzzer output @30cm, line powered typically 75dB, with a 12V supply typically 86dB)

Universal Power supply: - 90-240V AC power supply with 12V DC output. The NMI can be line powered from the PC serial port. The external 12V DC isolated supply will give a louder buzzer. (Very occasionally USB or PCMCIA ports have insufficient power to run the box and an external supply has to be used.)

Inter-Unit connection: - 15 metres of Cat 5 cable, 0.5 metre local test cable both cables terminated with RJ45 plugs. Serial port adapter to RJ45 adapter.

NMI Software on a CD

PC Minimum requirements: 90 (MHz) Pentium -class processor, 600-MHz Pentium III-class processor recommended. Windows XP / 2000 Professional (latest SP recommended) /ME/NT (SP6a)/ 98SE/98. At least 32MB RAM or the minimum required to run the OS. 96MB RAM recommended. MS Explorer 5.01, MS Outlook 2000 or later.